

How will the school support my child's transition to new settings?

Moving into our school:

- Discuss learning needs with prior setting
- Transition Booklet (if necessary)
- Additional visits
- School Entry Plan (if needed).

Moving to another school:

- Contact new SENDCo and make sure they know about any special arrangements or support
- Relevant records passed on
- If necessary, additional visits for your child to the new setting, or invite staff to visit your child at our school.
- An enhanced transition, where students will have the opportunity to discuss any worries and learn new skills relevant to their transfer.
- Transition Booklet (if necessary).

Moving years in school:

- Information on child's need is shared with their new teachers and learning support assistants
- Personalised plan (if necessary)
- Class Moving Up Day
- Transition Booklet (if necessary)

Who do I see if I am worried?

1. Speak to your child's class teacher first, as they support your child every day.
2. If you are still concerned, make an appointment with the SENDCo (Mrs. Claire Newman).
3. If you feel matters are still not resolved you can seek an appointment with the Head teacher (Mrs. Cohen) to discuss your concerns.

What outside professionals might work with my child?

- Speech & Language Therapists
- Educational Psychologists
- Learning Support Advisory Teachers
- Physical Impairment and Medical Support Teachers
- Hearing or Visual Impairment Advisory Teachers
- Occupational Therapists
- Physiotherapists
- Autism and Communication Advisory Teachers
- Mental Health Support Team



If you have any queries or wish to discuss the Information Report, please contact Mrs. Newman (SENDCo).



St Aldhelm's Parent Information

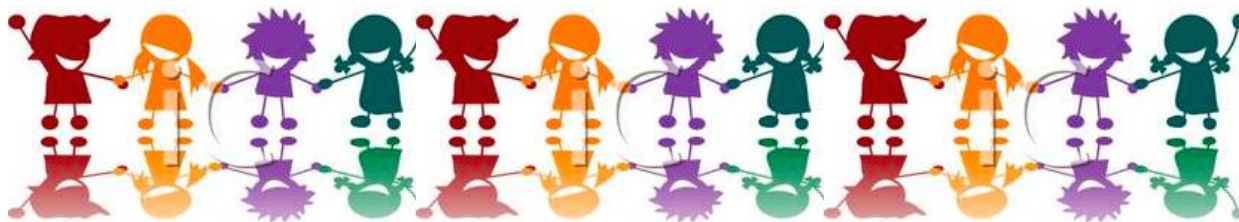


School Offer



For more detailed information on the School Information Report and SEND in the school, please see the school website:

Special Educational Needs
- St Aldhelm's VA Church
Primary School
(staldhelms.co.uk)+Educational+Needs&pid=58



Life in all its fullness for all our children

How do you know if a child needs extra help?

At St Aldhelm's Church Primary School, the class teachers monitor the children closely. If they have concerns about progress or attainment, they will discuss this with you and the Special Educational Needs and Disabilities Coordinator (SENDCo). After this, they will carry out assessments and observations in order to gather more information. They will record their findings down and will arrange a meeting with you and the SENDCo, where a plan will be put into place. This will be reviewed with you and depending on the outcome, will depend on the next step (the Graduated Approach). If you, the parent, have any concerns, your first contact should always be with your child's class teacher, who is always willing to make appointments and meet with you for discussions.

How will the school support my child?

Your child's education is very important to us and is overseen primarily by their class teacher. Your child may also work with Learning Support Assistants, volunteers and external advisors e.g. Educational Psychologists. Your child will take part in specific interventions and differentiated activities. The class teacher will explain this to you and further clarification can be gained via the SENDCo.

How is the curriculum matched to needs?

All class work is differentiated to match the needs of individual learners. Observations, marking and assessment inform planning on a day-to-day basis, to make sure all work is tailored to meet your child's needs. At St Aldhelm's Church Primary School, we work hard to tailor our curriculum and activities to meet the child's interests and to develop future interests. We involve the children in our enquiry project planning and create learning paths together. This way the children are involved and know what they are aiming towards. Teachers will use a range of resources to help support your child in their learning.

How will I know how my child is doing?

We have two parents' evenings during the year, as well as a full written report in the Summer Term. In addition to this, you will have School Passport review meetings, and if your child has an EHC plan we hold an Annual Review meeting to review, inform and plan next steps. You may also contact the class teacher for an update on your child's progress. If needed, we also have Home/School link books for day-to-day updates. There are also parent information sessions run throughout the year, as well as Learning Showcases.

What support is there for my child's overall mental health and wellbeing?

We put great emphasis on the development of children's mental health and wellbeing. We have invested in a range of physical and outdoor equipment and opportunities, as well as a PSHE scheme of work (Jigsaw) to support children and equip them with the tools to develop their wellbeing.

We also have a range of pastoral support available: alternative lunchtime provision (in negotiation with the Head teacher); ELSA-based support; opportunities to work with the Parent and Family Support Advisor (PFSA) and specific plans to support those with additional needs.

What specialist services does the school access?

We access Somerset County Council Services and services available via the NHS. These are outlined in this leaflet in the outside professional section.

Considerations are always made to ensure all school trips are inclusive. For those with additional needs, alternative provision can be made.