

ST. ALDHELM'S VA CHURCH PRIMARY SCHOOL
CHELYNCH PARK, DOULTING, SHEPTON MALLET, SOMERSET, BA4 4PL

Tel: (01749) 880376

www.staldhelms.co.uk

office@staldhelms.co.uk

HEADTEACHER: Mrs P Cohen

ST. ALDHELM'S NEWS

September and October 2023

Dear Parents and Carers

Welcome to our first Newsletter of the school year. It has been a great Term 1 and children have made good progress, from settling into school life in Reception to their many and varied successes and achievements in learning. I hope that it was helpful to meet for Parent Consultations to discuss your child and their development in social, emotional and academic areas.

We know that each year is a step of your child's primary school journey and we're part way through the start of this year's. I wanted to highlight and celebrate the amazing achievements of your children from last academic year. We had a phenomenal set of data from EYFS, Y1 Phonics, Y4 Multiplication Check and at the end of both Key Stage 1 and 2. Our data not only met but exceeded the national data that has been published so far. This is a credit to all the resilience and hard work from the children as well as the teaching staff and parents who have facilitated and supported effective teaching and learning. Well done everyone! See more on the Reports page of our website.

Thank you to the school community members who have created designs for our new school logo and thank you to everyone who voted and offered suggestions. These have now been shortlisted and amendments are being made before a final vote by our governing board. This is an exciting development for the school and will be ready for when the school convert to academy status in January. It will be shared when the final design is decided and ready.

It has been great to welcome so many parents and grandparents for Harvest, Reading Learning Showcase and Celebration Worship this term.

I hope you enjoy reading about some of our highlights – it's a bit of a bumper issue! Please read on for [New Classes](#) p2-3; [Celebrating Learning Behaviours](#) p4; [Reading & Learning Showcase](#) p6-9; [Cross Country](#) p10; [Collective Worship & Harvest Service](#) p11-12; [Maths Problem Solving Day](#) p13-14; [SEND & Talking Mental Health](#) p15-16; [Governor Message](#) p17; [Online Safety Update](#) p18; and [PTA and Community News](#) p19-22.

On behalf of all our staff and families, I wish to say a big thank you to Miss Webb for her contribution to St Aldhelm's and the After School Club. You have been brilliant and we wish you well for the future.

Kind regards

Pippa Cohen

Headteacher

TERM DATES for 2023-2024:

Half Term 23rd – 27th October

30.10.23	Term 2 starts
02.11.23	Year 6 Wells Festival of Literature
03.11.23	Open School 4-5pm School Disco 6-7.30pm
04.11.23	Open School 9-11 am;
07.11.23	Cross Country Collett Park
09.11.23	Parent Voice 9-9:45am (not 2 nd Nov)
20.11.23	Flu Vaccinations for all year groups
21.11.23	Vision Screening YR
23.11.23	Year 5 Primary Dance Festival at Whitstone
27.11.23	KS2 Film night 3.30-5pm (end time tbc)
28.11.23	KS1 Film night 3.30-5pm (end time tbc)
01.12.23	Christmas Fair 2:30-4pm
06.12.23	Nativity Performance Nightingales & Magpies 2pm
07.12.23	Nativity Performance Nightingales & Magpies 5pm
11.12.23	Learning Showcase – Christmas Art and Craft 2:45pm
12.12.23	Christmas Lunch
13.12.23	Christmas Service 9:30am Led by Falcons and Robins
14.12.23	Celebration Worship 9:10-9:40am Parent Voice after Celebration Worship
15.12.23	End of Term 2

Christmas Break 18th Dec – 1st January 2024

02.01.24	INSET DAY 3
03.01.24	Term 3 starts for all children
09.02.24	End of Term 3

Half Term 12th – 16th February 2024

19.02.24	Term 4 starts
26-28.02.24	Kilve Residential Trip for Y4, 5 & 6
28.03.24	End of Term 4

Easter Break 29th March – 12th April 2024

15.04.24	Term 5 starts
06.05.24	Bank Holiday
24.05.24	End of Term 5

Half Term 27th – 31st May 2024

03.06.24	Term 6 starts
28.06.24	INSET DAY 4
23.07.24	End of Term 6
24.07.24	INSET DAY 5

NEW CLASSES SEPT 2023

RECEPTION
ROBINS



YEAR 1
NIGHTINGALES



YEAR 2
MAGPIES





YEAR
3/4
OWLS

YEAR 4/5
KINGFISHERS



YEAR 5/6
FALCONS



A big well done to all the children who received certificates in Term 1 for their progress, success and achievement with their learning behaviours 😊



And congratulations to all children who completed the Shepton Mallet Library's Summer Reading Challenge this year ☺



A spotlight on Reading at St Aldhelm's

It has been wonderful to see so many families joining us for our Welcome Meetings and Reading Learning Showcase.

We have been updating the reading section of our website and so if you would like any more information then please click on the image to take you straight to the webpage.

Reading Volunteers

The Reading Framework, a new Department for Education document, advocates the importance of children reading lots, reading widely across all areas of the curriculum and in all lessons. The framework calls this, "putting in the reading miles" and also recognises that it is experience that will lead to proficiency in reading - as vocabulary and background knowledge improve, so does comprehension. These are all principles that we fully embrace at St Aldhelm's and one of the ways that we support children to put in the reading miles is through our wonderful reading volunteers hearing children read. This is a very valuable role and one that the children and staff at St Aldhelm's really appreciate. If you, or a family relative, are able to offer an hour or even an afternoon to support reading in our school, then please speak to Mrs Phillips or let the school office know.

As well as our reading in school to build fluency and comprehension, another of the ways that children put in the reading miles is with our school expectation that children should read and respond at least four times a week at home, with children in Robins, Nightingales and Magpies also enjoying a sharing book with an adult.

What should I write in my child's reading record?

For children in Robins, Nightingales and Magpies who are reading phonic books, over the course of the 4 reads you could work on different skills and comment on these. A suggested format might be:

Read 1: comment on the use of phonics

Read 2: comment on the fluency and prosody (expression)

Read 3: comment on the comprehension skills which show understanding of the book

With the fourth read, working on whichever skill you child would benefit from the most.

Read 1- use of phonics	Read 2 - fluency and prosody
<ul style="list-style-type: none"> Stopped to sound out... They read most of the words fluently except... They struggled to segment and blend... Identified (a grapheme i.e. oi) Identified (a common exception word) independently Self-corrected the word... Read the whole books accurately and confidently 	<ul style="list-style-type: none"> Paused at the full stops. They gave the characters different voices. They knew which word to give expression because of the exclamation mark! Read the book at a faster pace this time. Knew when to pause in the story to add effect. Used really good spoken expression.



Read 3 – comprehension	Summary comment for weekly sharing book reads
<ul style="list-style-type: none"> • We had a good discussion about the events in the story. • They were able to talk about how the characters were feeling and why. • Retold the story in the correct order. • They were able to answer lots of my questions about what was happening. • Able to predict what happened next. • Talked about what the character was like using clues (such as brave or clever) • Talked about how they would do things differently. 	<ul style="list-style-type: none"> • We shared the book together before bedtime. • We talked about other books we had read by this author. • They noticed this was similar to another story because. • They predicted what might happen based on the picture on the front cover and the title. • They wanted to retell the story in their own words by looking at the illustration. • Their favourite part was...

For children in Owls, Kingfishers and Falcons, there will be greater focus on comprehension using the VIPERS skills displayed in the front of the Reading Record but some of the comments might be based around the word reading itself such as self-correction or use of phonics for unusual words such as names as well as fluency and prosody.

Please look after our books

You will, I'm sure, be aware that budgets in school are tighter than ever. Last year, the school invested over £3000 in new phonic books to support high quality reading in our school. Sadly, we have noticed that some of our books are being damaged and therefore we will need to charge families for any damaged books at a cost of £3.50. We only have a few copies of each of our carefully sequenced books and if one is damaged this impacts on the flow of the children's book choices. PLEASE keep reading books in a separate book bag (or plastic wallet) and never place water bottles or snacks in with books.



Nightingales



Magpies

Learning Showcase Reading Response 17.10.23
Choose the most interesting words from a Paddington book that Vocabulary Victor would like.

care Siberian
meanwhile elephant
very

Now write a sentence of your own using these words.
Meanwhile the elephant was in the zoo.

Knowledge Focus: to retrieve information giving facts about a character

Skills Focus: to infer by using what is said and done

Reading Learning Showcase

darkest red hat He lives with the brown the brown and love the brown the brown
He likes going on his adventures He likes to be in a box He likes to be in a box
He likes to be in a box He likes to be in a box

into a mad Sammie
He lives in London



Owls



Skills focus: Share knowledge of the class book using your VIPERS skills.

Reading Showcase

Our class book is 'The Land of Nod'. With your partner/adult, discuss the following:

Summary - What has happened so far in the story?

Beliefs & Inference - Who is your favourite character so far? What are they like and why are they your favourite?

Vocabulary - Can you remember any new words we have come across in the book? Can you remember what they mean?

Predict - In your book, create a picture to show how you think the story is going to end. Explain your ideas in 2 sentences.

I think they are going to save Grandad and get rid of Crowley by using Wins magic. I think Rose, Arthur and Grandad are going to have a battle and at the end Pickles the dragon is going to give all the scariness.



Kingfishers



The NEWS Sheet

Which article on Page 2 could have the headline **Not Quite Hogwarts?**

MAGIC

Which of these definitions best defines the word **superstition**?

- an exceptional or extraordinary power or ability
- unnecessary or more than is needed
- a widely held but irrational belief or magic or luck

Approximately, how long did Tom Roberson think his trip across the Pacific Ocean would take? **15 months**

Tom Roberson's boat capsized (turned over) on the last leg of his journey. What does the term **leg** mean in this context?

The last part of a journey

Read the texts and tick the correct boxes.

	True	False
The University of Bristol has introduced a new course for the study of magic.	<input type="checkbox"/>	<input checked="" type="checkbox"/>
A large fire at Luton airport caused damage to over 1000 cars.	<input checked="" type="checkbox"/>	<input type="checkbox"/>
Few have a coast on the Pacific Ocean.	<input checked="" type="checkbox"/>	<input type="checkbox"/>

The NEWS Sheet



Falcons

Skills Focus: Share knowledge of the story using your VIPERS skills

Reading Showcase

We have been reading the book 'The House at the Edge of Magic.' With your partner / family member, please discuss the following:

- What has happened so far in the story?
- What genre is this story and how do you know this?
- Select two characters and describe them. Who are they and what are they like? Next, become one of those characters. Let your partner ask you questions and answer them in role.

Complete this next task in your book.

Why do you think the witch cursed the house? What do you think the witch wants? Make sure you justify your answers.

Character Notes:

- Impatient**
- Mr Downes**
- Friends with Mr Downes**
- Not's annoyed easily**
- Hates Rabbits and the witch**
- Hates the owner of the library**
- Lives in an orphanage**
- Her favourite book is the Mystery of Wagon Moor**
- Just like a cat**
- Sneaky**
- Red cap**
- Red pocket**
- The name is NINE because she has 9 eyes and she doesn't have her name and she has 9 eyes**

Handwritten Notes:

"Flabby spoon" said Eric

"No more strawberries" said Fobber

"No more strawberries" said Eric

"CARROUGHT" said Mr Downes

"POUNCE!" said Nine

"Witch clever" said Mr Downes

Questions:

In the story, Nine is a young girl who is an orphan. She has met a wizard. A troll? A troll and a spoon? Together they have to break a curse to prevent being shrunk beyond reality.

The genre of this story could be Mystery because they have to figure out how to break the curse but it could also be Adventure because there are many challenges to break the curse. BUT it could also be fantasy because of the troll and spoon - which is the main genre and why?

Character Lists:

- Hobberghat**
 - Wizard
 - Misses his tea
 - Hopscotch champion
 - Wears a wizard cape with 9 pipes underneath
- Nine**
 - An orphan
 - Red pocket
 - Loves Adventure books
 - Ragged clothes

Thoughts:

What do I think the witch cursed the house because of the right argument she had with the wizard.

What do I think the witch wants? The witch wants revenge on the wizard after the argument she had. She probably also wants to see them scared.



KS2 Mendip Junior Cross Country League

On Tuesday 3rd October our St Aldhelm's Cross Country Team represented our school by taking part in their first cross country event of the year, which was held at Millfield Prep School.

It was great to see some new runners this year! We are super proud of all of the children that took part. We had some amazing Team and personal bests on the day...Huge Congratulations!

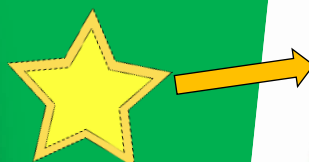
The children are looking forward to the next event on Tuesday 7th October at Collett Park, Shepton Mallet.

If your child is interested in taking part in future cross country events please contact the school office to make an enquiry.



Future Cross Country Fixture Dates: (all fixtures start 4pm unless noted)

- Tuesday 7th November 2023 - Collett Park, Shepton Mallet – Note 3:45pm start
- Tuesday 30th January 2024 - Palace Fields, Wells
- Tuesday 27th February 2024 - Downside School, Stratton on the Fosse (TBC)
- Tuesday 19th March 2024 - Millfield Prep School, Glastonbury (Inc. match Tea)
- 23rd and 24th April 2024 – Inter-Area Match – (venue TBC)



LSG TEAMS			
POS	SCHOOL	TOTAL	SCORERS
1	Millfield Prep	9	(2, 3, 4)
2	St Aldhelms	30	(1, 7, 22)
3	All Hallows	41	(12, 14, 15)
4	Upton Noble	63	(13, 23, 27)
5	Wells Cathedral	70	(8, 9, 53)
6	Keinton Manderville	75	(16, 29, 30)
7	Beckington & Mellis	80	(21, 25, 34)
8	West Pennard	80	(17, 28, 35)
9	Springmead Prep	90	(11, 33, 46)
10	Priddy & St Laurences	112	(19, 42, 51)
11	Evercreech	138	(26, 47, 65)
12	St Josephs	187	(45, 57, 85)
13	Wookey	222	(60, 62, 100)
14	Horrington	280	(91, 92, 97)
15	Bruton	79	(36, 43)
16	St Vigor & St John	87	(6, 81)
17	Chewton Mendip	112	(44, 68)
18	Ashcott	117	(48, 89)
19	Brookside	121	(39, 82)
20	Stoberry Park	177	(79, 96)
21	Coxley	191	(95, 96)
22	St Pauls	211	(102, 109)
23	Kilmerston	5	(5)

COLLECTIVE WORSHIP



This term we have explored the value of Creativity with a focus on Genesis verses 1-9.

Children have engaged with the Creation Story and had time to respond and reflect on what this means to them and as stewards of our wonderful world.

In Monday's Learning together for Life in all its Fullness (John 10:10) Worship, children have had the opportunity to lead worship. They have chosen themes to present that have enabled them to **flourish** with the hope that it may **inspire** others.



Harvest Service

Nightingales and Kingfishers delivered a fantastic Harvest Service in church to share with children in school and adults who joined us.

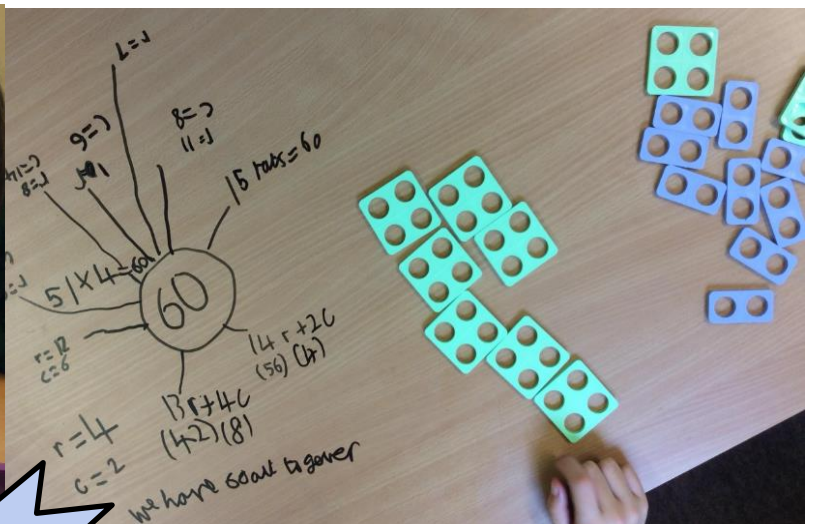
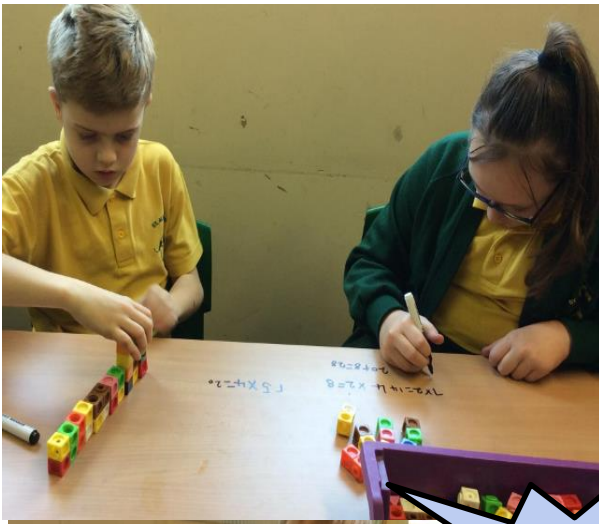


There were brilliant readers from Kingfisher class who spoke so clearly about the importance to give thanks and to reflect on all the things we should be grateful for, especially at this time of year. This was accompanied by some beautiful collaborative artwork from Kingfishers and Nightingales.

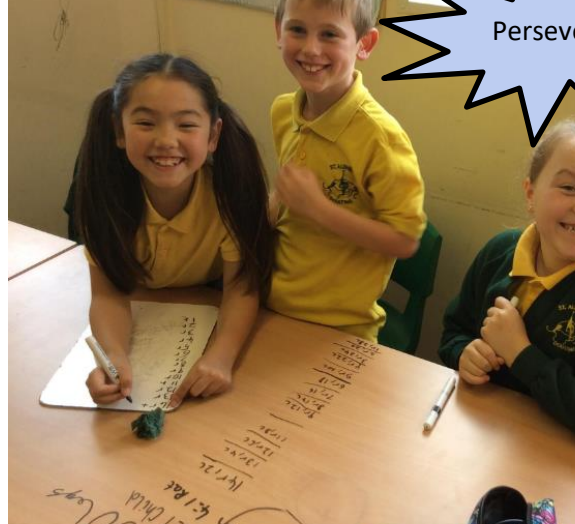
Kingfishers also worked hard to create a class 'pop up' poem all about harvest whilst Nightingales had written and delivered prayers linked to things they are thankful for in the world.



A big thank you for all the kind donations that have been brought into school. We know that times are particularly tough at the moment, so such generous donations are greatly appreciated.



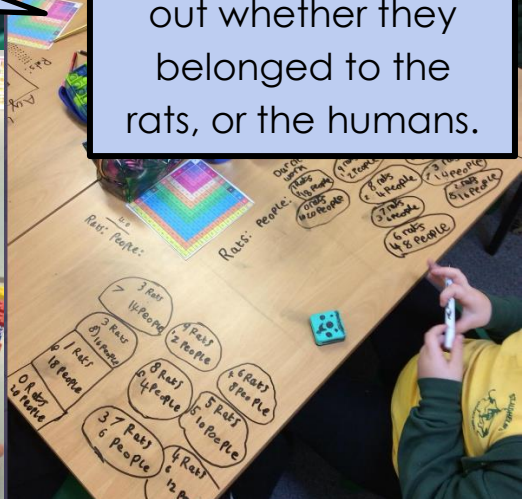
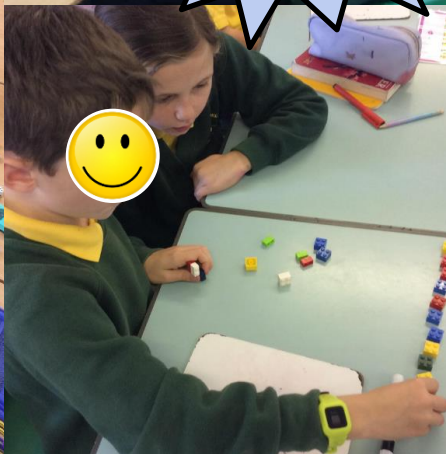
Perseverance



Friday 13th October
 Maths Problem Solving Day - KS2 tackled a problem on Friday based on the Pied Piper of Hamelin. They knew that there were a certain number of legs and had to work to find many possibilities to work out whether they belonged to the rats, or the humans.

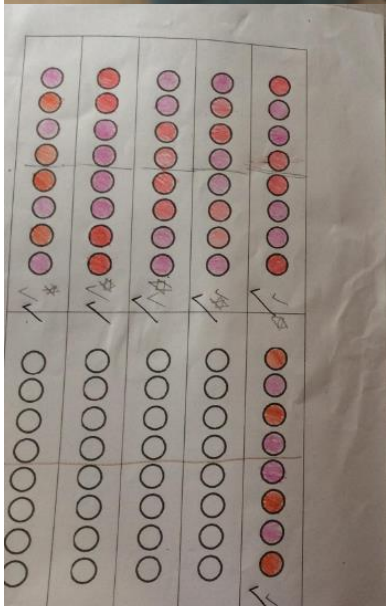
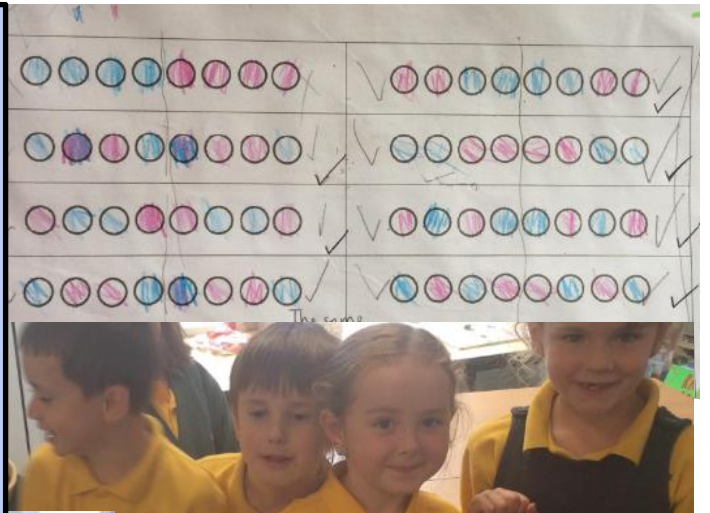
Systematic

Collaboration



KS1 Maths Problem Solving Day- KS1

tackled a problem on Friday to do with creating necklaces for a school fair. They had to make them with a certain number of beads and they had to be symmetrical. They worked really well together to find the range of possibilities that there could be.



Now: 5 out of 16

Problem Solving Day 19.10
Finding all possible solutions
✓ RPS
School Fair Necklaces

Rob and Jenise were making necklaces to sell at the school fair. They decided to make them very mathematical. Each necklace was to have eight beads, four of one colour and four of another. And each had to be symmetrical, like this:

How many different necklaces could they make? Can you find them all?

What do we know?
What could we use to help us?
How can we get started?
How can we work so that we know that we haven't missed any?

What if they had 9 beads, five of one colour and four of another?
What if they had 10 beads, five of each?



Special Educational Needs and Disabilities



Welcome to new families and welcome back to our existing families. At the start of the year, I like to inform and remind parents about our support for Special Educational Needs and Disabilities (SEND). I am the school's SENDCo (Claire Newman) and have been for the past 13 years. I love working at St Aldhelm's and getting to know and support the many families I have had the privilege to work with.

Home > School Information > Special Educational Needs and Disabilities

Special Educational Needs and Disabilities

Welcome to our Special Educational Needs and Disabilities page. I am Claire Newman, the Special Educational Needs and Disabilities Coordinator (SENDCo) at St Aldhelm's Church Primary School. I have been the SENDCo here for 13 years. I am very proud of the nurturing and inclusive environment we provide, as well as the support our school offers.

It is important to us that we work closely together to support your child in achieving their full potential. There are close links between families and school staff, with regular communication in the families preferred form. This can be through emails, Class Dojo private messages, phone conversations and face-to-face meetings.

What do parents think about SEND support at St Aldhelm's?

My child's teacher is brilliant at communication, she shares relevant information about his struggles and his achievements. I believe communication is very important to benefit the child and this teacher is fab at it! I have a lot of respect for his teacher and I can see the improvements since being in her class.

I can't fault the support the school have given.

The SENCO is very approachable for me and my child. She always tries to help the best she can.

I whole heartedly support Mrs Newman as a SENDCo and believe her skills and empathy have given my child the tools and confidence to leave Year 6 with strategies in place that he can use at secondary school!

SEND support for my child has been amazing, always had support from day one which has been amazing. He is happy at school.

My children are well supported and the new APDR documents give me lots of information about how my child is progressing.

Staff always make time to discuss our daughters needs and are supportive and approachable.

We have had an extremely healing and supportive start with the school. We are very grateful.

What do children think about the support they receive at St Aldhelm's?

We have help to learn because it helps you get even better at doing lots of things. We can then be even more amazing when we're old.

I use lots of materials to help me. I don't just have a teacher helping me.

We have Chromebooks that help us with our writing. I can speak and it will type or I can use word banks.

We are given the freedom to decide how we share our learning. We can do double-page spreads, make a presentation, have a debate, create a book and loads more. This

We have pictures to go with the words to help us.

Adults help us and we can have that in class and out of class. If we need quiet time or need to talk to someone we can.

5	Very good
4	Good
3	Fair
2	Needs improvement
1	Very poor

I would like to highlight the SEND part of the school website. This can be found via the School Information tab or by clicking on the image. On this page you will find further information about SEND and our school processes. I also add support documents at the bottom of the page.

A KEY MESSAGE

Please do keep in touch. If you have any queries or want further information, please do let us know. If it is specific to your child, I would always suggest speaking to their class teacher first but I am also available to support. You can contact me via the school office, through Class Dojo or come and speak to me (I am the Year 5/6 teacher).

Talking Mental Health



Wellbeing Action Group

Last year, Mrs Newman (Senior Mental Health Lead) set up the Wellbeing Action Group, which grew throughout the year. The group did a fantastic job of planning, discussing, and implementing ideas to help raise awareness and start the development of areas in the school. We are so pleased to share that the groundworks for our wellbeing shepherd's hut and sensory garden are well under way. The group look forward to sharing more information on this journey and developing their roles further.



We are pleased to introduce our new Wellbeing Action Group. We have had new additions to the group as we said farewell to the previous Year 6 children.

Please visit our section on the school website. You will find this on the menu in the Special Educational Needs section or by clicking on the picture. Here you will find information and updates of what we are doing, as well as tips to support you at home.

Home > School Information > Special Educational Needs and Disabilities > MENTAL HEALTH AND WELLBEING

MENTAL HEALTH AND WELLBEING



At St Alhelm's VA Church Primary School, we aim to promote positive mental health and wellbeing for our whole school community (children, staff, parents and carers). We recognise how important mental health and emotional wellbeing is to our lives in just the same way as physical health. Children's mental health is a crucial factor in their overall wellbeing and can affect their learning and achievements.



Our Wellbeing Action Group

We have an active Wellbeing Action Group that started in November 2022. Our child leader, with the help of Mrs Newman (Mental Health Lead), have carried out a fantastic job raising awareness around mental health, fundraising for wellbeing events and looking ahead to future projects. In order to share their messages and updates, they have a display board in the school's central corridor. They meet weekly to plan, discuss and carry out their latest initiatives. We hope this year to invite parents to join our Wellbeing Action Group.



We voted
2018

In this section

MENTAL HEALTH AND WELLBEING

SOMERSET'S SEND LOCAL OFFER

ST ALHELM'S SEND POLICY

A message from our School Governors

A Time for Change

As you will be aware the school is undergoing a great deal of change at this time and change can be exciting yet unsettling for everyone and it is important to acknowledge this.

The job of governors is to think and plan strategically with a future vision in mind whilst ensuring any change and subsequent transition is managed appropriately and in the best interests of the children and all stakeholders. The children of St Aldhelm's are our top priority and focus during this time of change and opportunity.

I would like to reassure you that governors in collaboration with the Bath & Wells MAT are planning for a new beginning and new opportunities through the benefits of our affiliation. We are currently implementing an interim structure of an Executive head teacher and Head of School, as a replacement for a substantive head teacher position. We believe this will ensure there is continuity and consistency whilst dividing the strategic and operational roles of the job.

Although St Aldhelm's date for conversion and joining with the B&W MAT isn't until Jan'24 (currently on schedule for this date), the B&W MAT have committed to supporting us through this period and beyond.

Look out for future communications as we move forward.

Adam Underwood

Chair of Governors



St Aldhelm's
Church Primary School, Doultling

OPEN SCHOOL

Friday 3rd Nov 4-5pm
Saturday 4th Nov 9-11am

Call to book 01749 880376

Reception 2024

Our school will be holding **Open School** sessions on **Friday 3rd and Saturday 4th November for prospective parents**. Anyone with a preschool child will be making their decision about where they send their child to school next September. This decision has to be made and an application submitted to Somerset County Council in **January 2024**. We really advise visiting us to see the school facilities, the opportunities on offer at St Aldhelm's and most importantly slideshows of the children who already attend the school. Staff will be on hand to show you around and answer any questions. We also have some vacancies in our current Reception class and welcome any in-year application to join us. Please do share the date with any friends and family who are viewing schools for their children. For first time applications visit:

<https://www.somerset.gov.uk/education-and-families/apply-to-start-school/> and for more

information please contact the school office on 01749 880376.



Helping children and young people stay safe online

Online safety for children is everyone's responsibility. As parents and staff, one of the ways we can take responsibility is to be aware and informed ourselves about online activities.

We are increasingly aware of children accessing and using sites and platforms that are not appropriate for their age. Please be aware and use helpful online safety updates to help you...

Guides and resources

Parents and Carers



Tips, advice, guides and resources to help keep your child safe online

As a parent or carer you play a key role in helping your child to stay safe online.

You don't need to be an expert on the internet to help keep your child stay safe online. Our advice and resources are here to support you as you support your child to use the internet safely, responsibility and positively.

Social media Hub

Advice about key social media platforms and apps



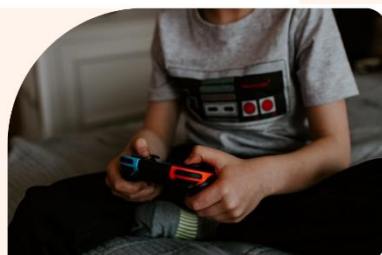
Advice for parents and carers

Phones



Advice for parents and carers

Games consoles



Click on the boxes on this page to link to the website for helpful information.

The best way to know what your child is doing online, is to keep talking to your child about what they are enjoying playing or doing online. Having open communication is the way to make any online activity transparent. It will help you as parents and your child to keep safe

St. Aldhelm's Community News

Friends of St. Aldhelm's PTA

Thank you so much to the children and teachers for your support again this year in making your beautiful Christmas cards. **We have raised a fantastic £443.12 to support our school.**

Class Reps: We are pleased to share this year's class reps. Please feel free to ask them anything PTA related and let them know if you feel that you might be interested in helping out at any events or by fundraising.

Robins: Kat Livermore, Danielle Collins
Nightingales: Hannah Allen, Izzy Luckin
Magpies: Carolyn Hysted-Edwards, Becky Leyton
Owls: Gemma Ridley
Kingfishers: Kayleigh Oatley, Katy Emery
Falcons: Anna Miller, Julie Brake

Upcoming events:

- **Glow Disco - 3rd November** 6-7:30pm.
See poster on next page for details and booking information.
- Christmas Fair Planning Meeting – **9th November** at 1:45pm, followed by...
- PTA AGM – **9th November** at 2:45pm
- **Film Night:** Years 3, 4, 5 & 6 - **27th November**
- **Film Night:** Years 1 & 2 - **28th November**
Both will happen straight after school. Film and end time tbc.
- **Christmas Fair - 1st December** 2:30-4pm tbc.



The preparations for our Christmas Fair on the 1st December are well under way, but we need some help from our school community.

Do you or someone you know own a business or work for a company that would consider donating a prize for our raffle? Things like beauty treatments, days out, vouchers or hampers would be wonderful, but we would be very grateful for any donations received.

Mendip Activity Centre and Mendip Raceway have both donated wonderful prizes already.

If this is something you are able to help with please talk with your PTA class rep or we now have an email and can be reached on st_aldhelms_pta@outlook.com

Thank you for your continued support,

Friends of St Aldhelm's



Friends of St Aldhelm's

GLOW DISCO

3rd November 6-7.30pm
School Hall £5 per child

Snacks & drinks, face painting, glow tattoos all included

Scan QR code below or visit
www.pta-events.co.uk/friendsofstaldhelmspta to book your ticket



St Aldhelm's pupils only
KS1 pupils must be accompanied by a responsible adult



 **24th October - 12 noon**
@Shepton Mallet Library

THE MONSTER THAT CAME IN FROM THE COLD

IT IS NOT JUST SPIDERS THAT COME INSIDE IN AUTUMN.
**A MONSTEROUS ADVENTURE
FROM ADE BOWEN**

A FREE family event this Half Term
ideal for children aged 5-9 & their grown ups
book your tickets here :

www.literallyshepton.co.uk/events



DOWNLOAD THE FREE EBOOK FROM AMAZON THIS OCTOBER

The BIG TWO-PART PUMPKIN WEEKEND

Join us for autumnal fun and family creativity

FRIDAY 27th October
12-2pm at
COLLETT PARK CAFE

Pick-up-a-pumpkin (donate to MIND)
Pumpkin Carving
Face Painting
Biscuit Decorating
Fancy Dress
Hot Dogs & more
.....for small charges

More information contact Tracy
at tracy.harris230@btinternet.com
or at the Kiosk

SUNDAY 29th October
4-5pm
at
COLLETT PARK BANDSTAND

Bring your carved pumpkin
Collect a Candle
Art with Sophie, a local artist
Stroll through the candle-lit pumpkins
Choose your top 3 favorites
Prizes awarded
Cafe open 4-8pm

More information contact Gill
revgill.sheptonmallet@gmail.com



Donations to MIND in Shepton Mallet 




Threads through Creation

Spectacular scenes in silk

Wells Cathedral
18 October to 27 November 2023
wells cathedral.org.uk/threads

‘Threads through Creation’ is a spectacular sequence of twelve huge textile panels. It’s an exuberant retelling of the creation story in the book of Genesis, a retelling which many visitors will find both moving and breathtaking. Viewers are treated to a wonderful variety of colours, shapes, patterns – and of course lots of creatures!

The exhibition is one of the largest textile projects by a single artist, ever. It has taken Jacqui nearly three years. It follows on from ‘Threads through Revelation’, her first huge exhibition which visited 14 cathedrals from 2016 to 2018, and was seen by more than 500,000 visitors.

Threads through Creation will be on display at Wells Cathedral from 18 Oct - 27 Nov. On some days the panels may need to be moved to allow for other events that are due to take place in the Nave, but we are aiming for them to still be on display in the Transepts on these days.

Admission is included with entry to the Cathedral.



Christmas Card Competition

Entries to be sent by **Thursday 23rd November 2023** to

Shepton Mallet Town Council
1 Park Road,
Shepton Mallet,
BA4 5BS

or emailed to info@sheptonmallet-tc.gov.uk

Winner gets to turn on this years Christmas Tree Lights on Friday 1st December

Please see next page for competition entry form. These can be returned to the Shepton Mallet Town Council (address on poster) or emailed to info@sheptonmallet-tc.gov.uk



Christmas Card Competition 2023

Name: _____

School: _____

Age: _____