

SCHOOLS AND EXTENDED SERVICES QUESTIONNAIRE – Spring 2008

CHILDCARE

(please enter a tick \checkmark in the most appropriate box)

Do you **have** a childcare arrangement BEFORE school?

Yes	No
-----	----

Number of children care is required for?

If yes, which arrangement do you use?

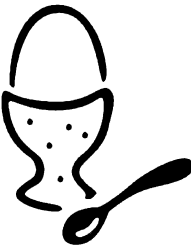
Friend or relative	Childminder	Breakfast club	Other – please specify

Do you **need** a childcare arrangement BEFORE school?

Every day	At least once a week	Occasionally	Never

If you answered yes, please tick which of the following options you would prefer.

Breakfast club on school site	Childminder who delivers to and from school



If you need a Breakfast Club and one was not available at your school, would you use a Breakfast Club at a nearby centre, if safe transfer to school for your child was provided?

Yes	No

How much would you be prepared to pay per day for Breakfast Club?
(Please tick one box)

£2.00	£3.00	£4.00	Other – please specify

AFTER SCHOOL AND HOLIDAY CARE

Do you already **have** a childcare arrangement AFTER school hours?

Yes	No

Number of children care is required for?

If yes, which service do you use?

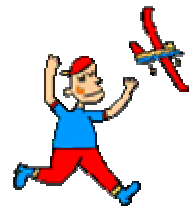
Friend or relative	Childminder	After school club	Other – please specify

Do you **need** childcare AFTER school hours?

Every day	At least once a week	Occasionally	Never

Which arrangement would you prefer?

Childminder	Activity at or nearby school



Do you already **have** a childcare arrangement during school HOLIDAYS?

Yes	No

If yes, which arrangement do you use?

Friend or relative	Childminder	Holiday club	Other – please specify

Do you **need** childcare during school holidays?

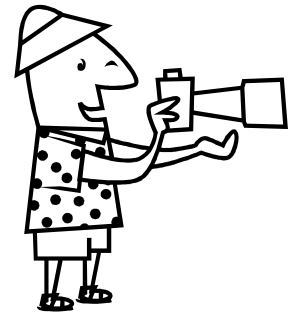
Every day	At least once a week	Occasionally	Never

Which arrangement would you prefer?

Childminder

Activity at or nearby school

--	--



What sort of activities would your child/children be interested in?
Please choose as many as you like

Sports

Music

Dance and
Drama

Arts and Crafts

--	--	--	--

ICT

Other – please specify

--	--

How much would you be prepared to pay per day for an after school activity, which provides good quality care for your child until 6pm?

£4

£5

£6

Other – please
specify

--	--	--	--

How much would you be prepared to pay for a whole day holiday activity, which provides good quality care for your child 8am – 6pm?

£15

£18

£21

Other – please
specify

--	--	--	--

STUDY SUPPORT

Which activities, if any, do you think would benefit your child?

Homework /
computer
Study club

Subject based
club

Extra Languages

Gifted and
Talented
Courses

--	--	--	--

Problem Solving

Team building

Extra tuition

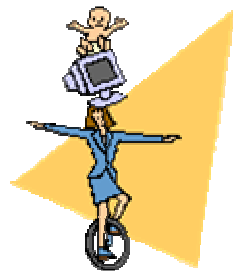
Other –
please specify

--	--	--	--

PARENT SUPPORT

Would you be interested in parent information evenings?

Yes	No



If you answered Yes, which topics would you be interested in?

Managing behaviour	Parenting skills	Healthy eating and nutrition	Managing finances

Conflict resolution	Information regarding your child's curriculum	Other – please specify

Would you be interested in developing your own skills?

Yes	No

If you answered Yes what topics would you be interested in?

ICT	Improving Reading Writing or Maths	Arts and Crafts	Drama

Languages	Sports	Other – please specify

THANK YOU



For your time